



Inclusion

**A NEW
DIRECTION**



2025/26

The Primary Arts programme aims to provide high quality, inspiring arts, cultural and creative opportunities for children and staff in London's state primary schools and primary SEND settings. **This section provides inclusion information for SEND settings and for mainstream settings with large numbers of pupils with additional needs.**

The Primary Arts programme is offered free of charge to schools, helping to unlock the creative potential, cultural capital and skills of school staff and children. The programme offers opportunities to support wellbeing, confidence and personal interest for staff and pupils, and professional development for staff. **We aim for the full programme to be accessible to and supportive of Deaf, disabled and neurodiverse people, whether they are pupils or adults.**

A New Direction believes in the talents and potential of all children and young people. We challenge the structural and systemic inequalities that influence children and young people's lives and opportunities and prioritise those that experience these. Our [I Am network](#) for educators working with Deaf, disabled and neurodivergent children and young people in London's schools and specialist settings has been running for over 10 years, and our [I Am network](#) for Deaf, disabled and neurodiverse children and young people celebrated its 10th anniversary in 2025.

Our experience of delivering these programmes informs the design and delivery of Primary Arts. Our partners include disability-led organisations and practitioners with lived experience, we consult with SEND professionals, and we strive to ensure that the full programme is accessible to all.

Inclusion focus:

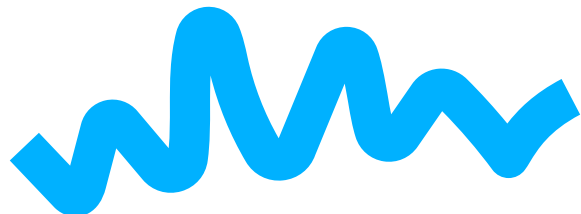
- We only work with organisations whose values and approaches around inclusion are aligned with our own.
- We work with a schools advisory group to ensure that we listen to what schools need. This group includes staff from SEND settings and SENDCos from mainstream primaries.
- We include access and inclusion information throughout this brochure to help schools find the offer that is right for them and their pupils.
- An access budget is available to support schools working with pupils with SEND to engage in the programme – for example, to support with the cost of minibus hire for trips or to bring additional support staff.
- All out-of-school activity for staff and pupils is delivered in accessible venues.
- The access budget can also be used to support staff participation in CPD.

All five strands of Primary Arts are designed to work for mainstream and SEND settings.

For Pupils

The **IN-SCHOOLS TOURING PROGRAMME** brings a cultural organisation into your school to deliver a show and workshops for one year group of children. We also offer twilight staff CPD in school beforehand, and provide high quality materials, books and resources.





Programme adjustments

- For SEND settings with small class sizes, we may be able to offer the show and workshops to more than one year group.
- Shows and workshops can be adjusted to meet pupil needs (e.g. shorter, quieter, simpler, more sensory).
- Organisations bring an access and sensory toolkit with them, including fidget toys and ear defenders for pupils who might need them.
- Organisations are supported to co-plan with all schools before delivery takes place, so that they have a good understanding of your pupils and their needs.

Our approach

- We discuss organisations' values and approaches around inclusion as part of our selection process each year to ensure they align with our own.
- Organisations working with us are supported by an Access & Inclusion Adviser to ensure their offer works for SEND settings.
- Everyone coming into schools attends an onboarding session that includes a focus on access and inclusion.
- Our Access & Inclusion Adviser will support in-school delivery if needed.

The **GO & SEE** programme offers schools free trips to a range of cultural venues. Schools can book for a year group but can also choose to work with a smaller group if they prefer. The programme is delivered in two seasons, winter (December) and summer (June/July).

Programme adjustments

- For SEND settings with small class sizes, we may be able to offer the trip to more than one year group.
- Many partner venues offer specific sessions or relaxed performances for SEND settings. These are clearly flagged in the programme brochure.
- Our access budget is available to SEND settings to support additional costs such as travel or additional support staff.

For staff

The three programme strands aimed at school staff are designed to support professionals working in any primary setting. All sessions are delivered in accessible venues, and we have an access budget available to support participants if needed.

The **Cultural Education Leadership Programme** focusses on teachers developing leadership skills in any type of setting. Each participant completes a Leadership for Change research project, choosing their own area of focus to support their own learning and development and that of their pupils.

Our **MASTERCLASSES** focus on creative approaches to reader development at all levels and in all settings.

Our **COME & TRY** sessions are mainly focused on staff wellbeing. They also provide a range of practical craft approaches that can be used in the classroom.

Find out more about Primary Arts and download the full programme brochure on our [website](#).

Where relevant, we have used the following symbol to identify information that SEND settings may find useful throughout the brochure:



If you have any questions about access and inclusion in the Primary Arts programme, please email us at schools@anewdirection.org.uk.

