



Little Angel Studios Visual Story

This is a visual resource to assist your visit to the Little Angel Studios to see a show. This resource is intended to help prepare visitors for a new experience and to help them to become familiar with the surroundings and situation.

Welcome to the Little Angel Studios.

This is the front entrance of the Studios.



The front door is open 30 minutes before shows start.



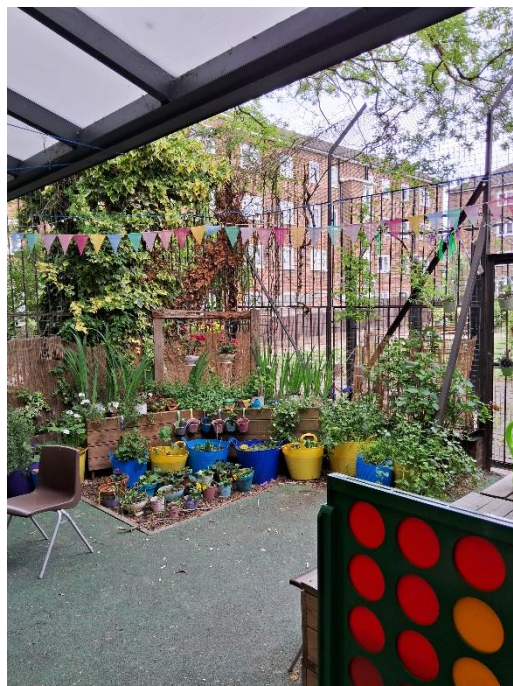
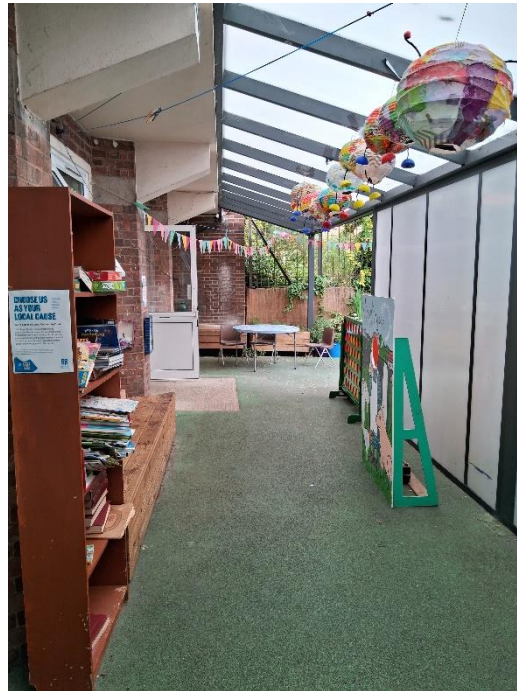
This is the Box Office where you can buy tickets and check your booking. It is also a shop where you can buy toys, gifts and refreshments to eat and drink while you watch the show.

Little Angel Theatre Staff will be there to help you find your way around and give you information. You will be able to identify who the Little Angel Theatre staff are as they will be wearing T-shirts or jumpers with our logo on.

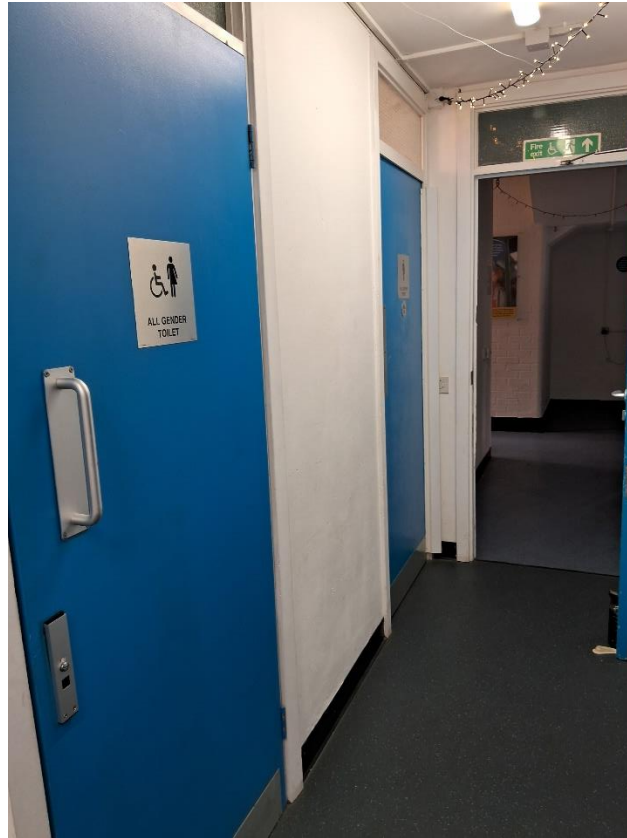


You can ask them questions if you need help. They will tell you when it is time for the show to start and help you to find a seat when you go into the auditorium.

There is a garden you can wait in if it isn't time for the show to start or if you need a break during the show. There are chairs and tables, books to read and games to play. Some of the garden has a cover so you can wait here even if it is raining! This is also where you leave buggies, pushchairs or scooters during the show.



If you turn left at the Box Office there are two toilets. The one on the left is an accessible toilet and the one on the right has baby changing facilities.



This corridor leads to the door you need to go through to go upstairs to the auditorium to see the show.

When the auditorium is open and the show is ready to start a Little Angel Theatre staff member will let you know. The shows take place upstairs in the Studio auditorium.

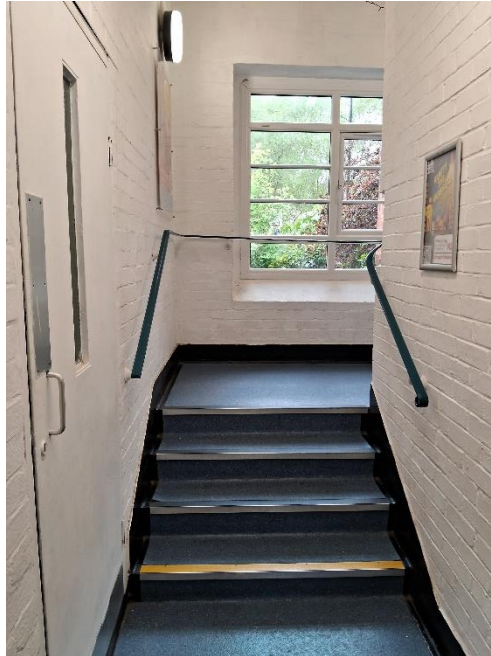
This is the door to the stairs and lift towards the Studio auditorium upstairs. When it is time for a show to start this door will be open.



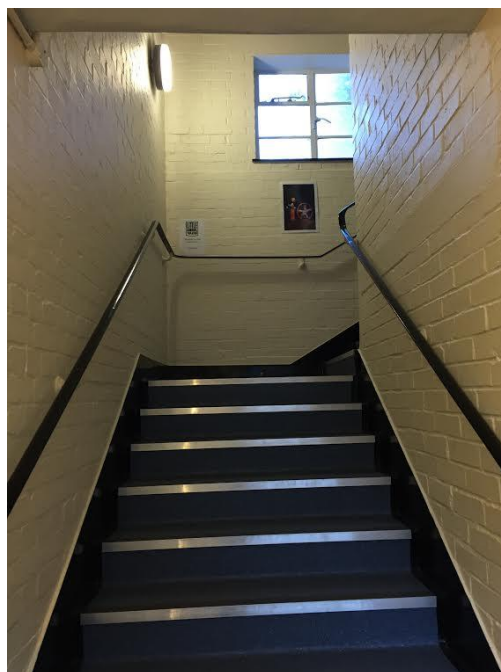
This is the lift door. If you need to use the lift, ask and someone will help you.



These are the stairs. There are three short sets to go up. They are past the lift on the left. Go up the stairs all the way to get to the studio upstairs.



Set one



Set two

At the top of the third short set of stairs is a colourful mural. The Studio auditorium entrance is on the left and the lift exit door is on the right.



There will be Little Angel Theatre staff here to check your tickets.



This is the door you go through to enter the Studio auditorium where the show will take place. The door will be open and there will be a member of Little Angel Theatre staff there to help you find a seat. You can sit anywhere that is free when you arrive.

The Studio auditorium doesn't always look the same - It depends which show you are coming to see, but there will be somewhere for you to sit and watch the show and a 'stage' area for the show to take place.

Sometimes the audience sits on the floor and sometimes on chairs or benches and sometimes a mixture. Little Angel Theatre staff will help you with this when you enter the auditorium. You can also look at show specific visual stories which will give you more information about the exact show that you are coming to see.



These are some examples of shows set up in our Studio. We hope that you enjoy the show that you are coming to see!